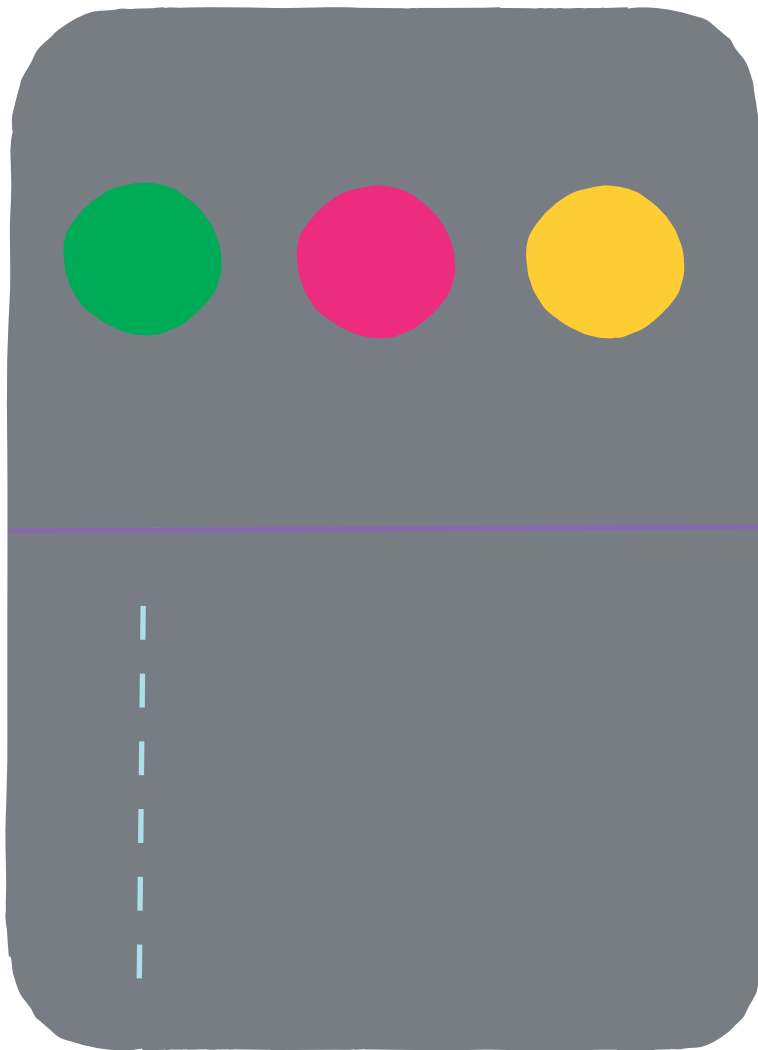
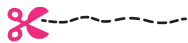


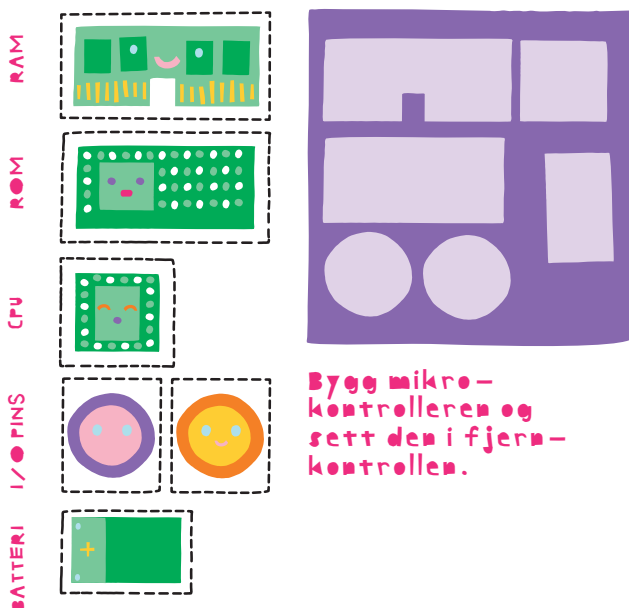
## FJERNKONTROLL



Klipp etter den stripete linja



## MIKRO KONTROLLER



## KODE

START >>

Trykk her for at man skal gjøre dette:

---

---

---

Trykk her for at man skal gjøre dette:

---

---

---

Trykk her for at man skal gjøre dette:

---

---

---

> SLUTT

START >>

Trykk her for at man skal gjøre dette:

---

---

---

Trykk her for at man skal gjøre dette:

---

---

---

Trykk her for at man skal gjøre dette:

---

---

---

> SLUTT